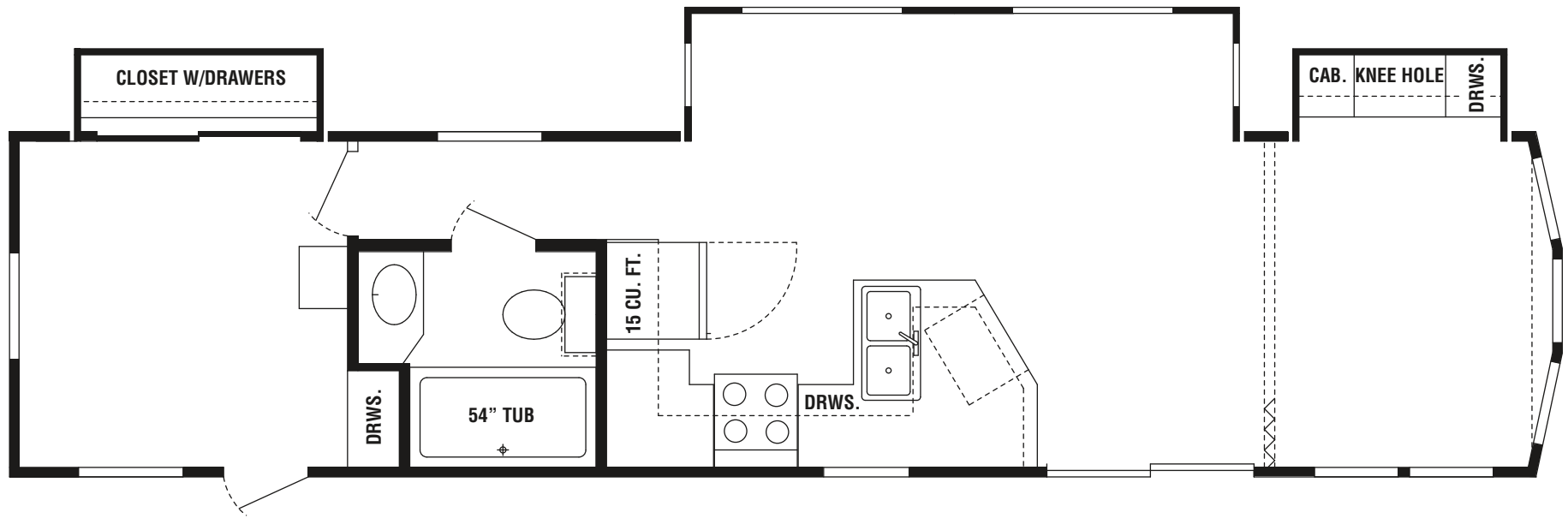


Executive Series

Model Number: 3847 C

Width: 8.5'

Length: 41'



KROPF INDUSTRIES, INC.
58647 S.R. 15, P.O. BOX 30
Goshen, IN 46527-0030

Phone 574-533-2171
Toll Free 800-634-2171
Fax 574-533-3723

www.kropfind.com